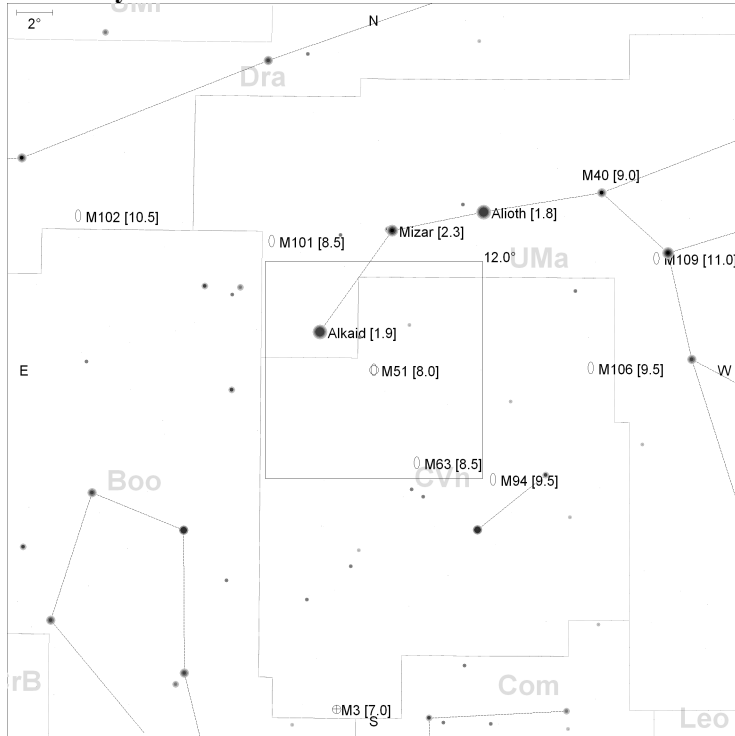


Sample Chart

M51 Whirlpool Galaxy

Naked Eye View: 40.0°



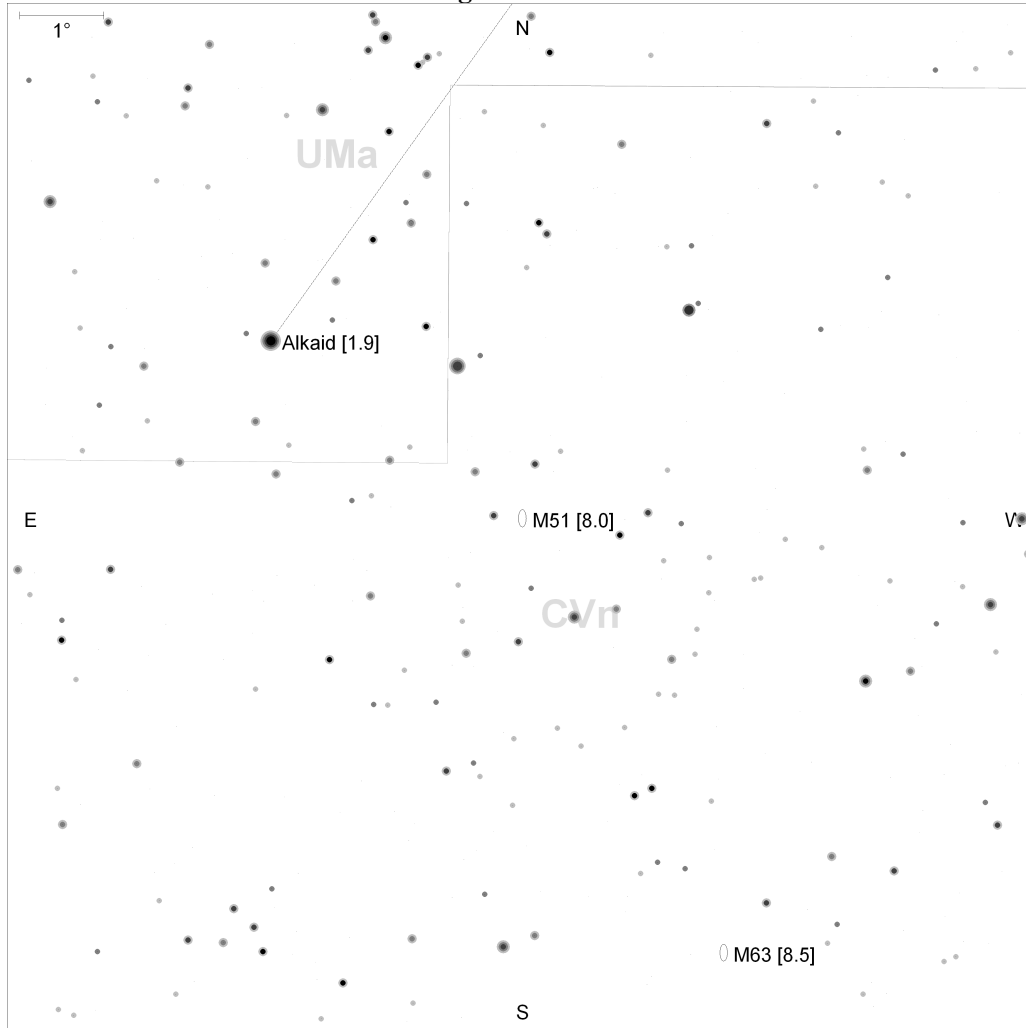
Observer: Phred Smith
 Date: 12-29-08 Time: 10:48pm
 Site: Savage Seeing: 7 Trans: 4
 Telescope: Meade LX90 10"
 Eyepiece: 35mm Panoptic Power: 72x

Notes

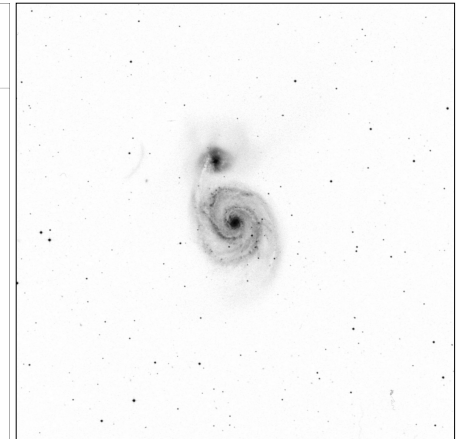
All my finder charts use this same basic layout. There might be additional fields in the observation data as required, based on the type object being charted.

I use a 80mm finderscope. The stars to 10th magnitude work well for me at the sites I observe at. I would appreciate any feedback relating to how these charts might be improved to be more useful for everyone.

Finder View: 12.0° Stars to 10th Mag



30'x30' HST2



Const:	CVn
RA:	13:29:54
Dec:	+47°12'00"
Type:	Galaxy
Pri Mag:	8
Size:	11x7